



## **Company profile**

Since 1926, Martens Infra has grown from a transport company running a quarry, to an all-round civil engineering contractor.

With its more than 150 professional employees and an extensive plant park, Martens Infra is a market player able to handle projects from A to Z. This brochure will give you an in-depth impression of our company. From our quarries and services until the recycling activities and concrete production. These items are regularly discussed by our clients and therefore we would like to give you an idea of our working method and the way we combine and guarantee durability, quality and flexibility in real terms, day after day.

## **History**

In 1926 the extraction of sand and gravel on the Crijsberg was officially registered at the Chamber of Commerce by Mr Gil Martens. During World War II the extraction was at a standstill. After the war however, Pierre Martens – Gil's son – took up the exploitation. The post-war reconstruction boosted the demand for raw materials. At that moment, five people were working in the quarry. One among of them was Jo, Pierre's 15-year old son. There were no machines, all work was done by hand. However, in 1955 Jo bought a DAF truck and started working as a transport contractor. In 1958 the first machine was introduced: a little crane with a pincher and a conveyer belt. Through the years, the machinery expanded with among others, the purchase of a Menzi Muck in 1982. In 1992, his son Maurice, joined the business and this changed the course of the company. Equipment rental was no longer a core activity and Martens Infra became a contractor company. In 2001 Maurice became the company's general manager and together with his wife Eugenie he is currently in charge of a prosperous, international company.

## **Infra services**

Many roads lead to Rome. They usually have the same profile: a sewage system below the ground, covered by a layer topped with asphalt, bricks or a form of ecological paving. Martens Infra carries out complete projects both underground and above the ground in a flexible and professional way. The required sand and gravel, as well as the recycled material, is sourced from its own establishments. Sewage works are completed in either PVC or concrete, based on requirements. We have a lot of experience in the construction of retention reservoirs and wall construction also form part our expertise.

## **Environmental technology**

Martens Infra takes care of sanitation procedures and soil surveys on the principal's behalf and advises the principal on how to deal with these issues. All this takes place in discussion with the authorities. A soil survey or examination in accordance with the Building materials decree determines the required measures. The location should either be cleaned completely or partially, the soil can be re-used on site or the excess soil is shipped to an accredited establishment or processor.

## **Structural dismantling**

Infill development projects often start with the (partly) demolition of an established area. Martens Infra is able to carry out all demolition in-house and this in a fast and accurate way, in which recycling possibilities have been taking an important place for years.

## **Demolition activities + recycling**

Our demolition equipment recycle demolition rubble and waste substances on site at the customer into high-quality building material for use in road construction, concrete plants and other industrial applications. At the various industries, we recycle the waste products into useful products suitable for own production procedures. We first assess the product to be demolished on the parameters to be used. If necessary, Martens Sloopwerken offers the necessary advice on the various applications and processing options and upon handover of the crushing works, the customer is issued with a certificate on the crushed product.

As mentioned before, recycling plays an important part within Martens Infra. We are constantly looking for recycling solutions of residues. Residues can be reused by sort of immobilizing them. The residue is transformed into a building material and avoids high waste disposal costs. Moreover, the building material is reused in an environmentally-friendly and responsible way. With structural dismantling, materials are all separated and shipped to the relevant processors or recyclers. All building rubble is processed in our own crushers and reused as foundation material. This environmentally responsible approach guarantees a sustainable operation for both the principal and the contractor.



## Concrete products

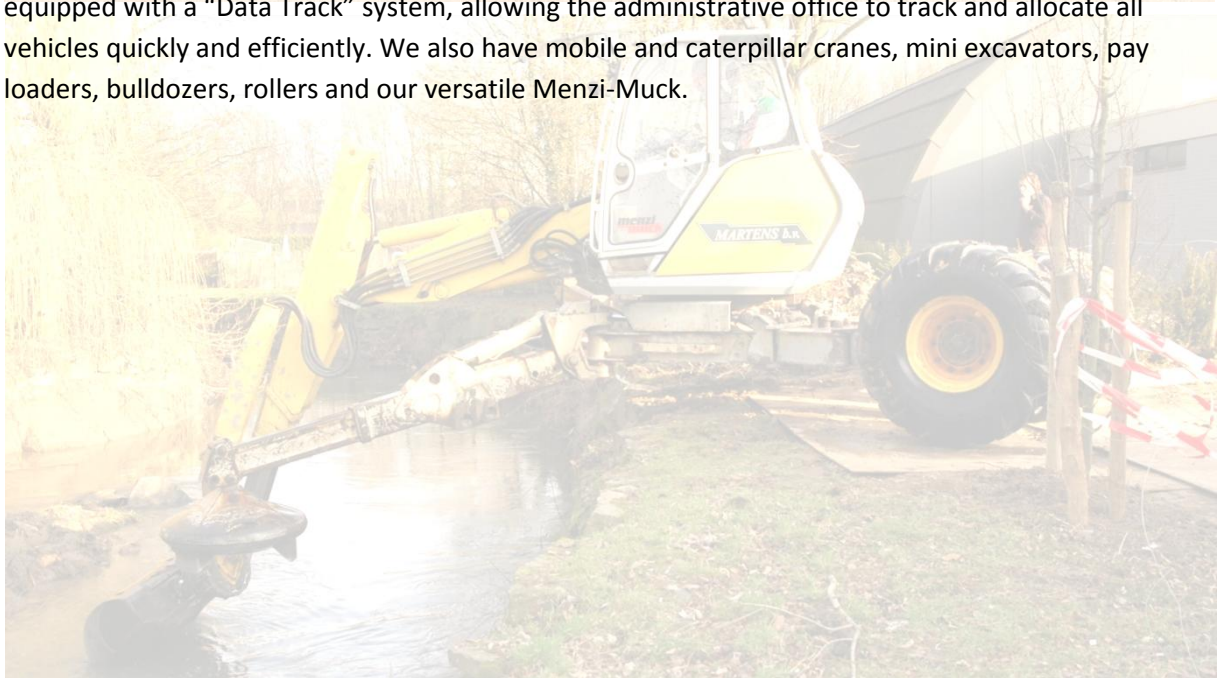
Besides its own quarries, Martens Infra also owns a share in a concrete centre with an accompanying laboratory. We will mix anything for you under controlled conditions based on your requirements. We specialise in the 2mixZ stacking blocks. These blocks comply perfectly with today's requirements: simple to assemble, easy to de-assemble and re-usable. That is also one of the reasons why these blocks are technically worthwhile and extremely versatile in use. All activities are carried out by 2MixZ, a subsidiary of Martens Infra.

## Quarries

The quarries – consisting of sand, gravel and yellow and red baking clay – are of course the most important component in the operational management of Martens Infra. The quarries are located in Beek in the province of Limburg (the Netherlands) and in Geilenkirchen in Germany. The space that became available in these quarries is used to deposit clean and slightly contaminated soil (cat. 1). We also dump clay as a product at bigger quarries (if the quality suffices).

## Machinery

The extensive machinery of Martens Infra enables us handle projects from A to Z, day in, day out. We dispose of an extensive fleet consisting of various types of trucks and trailers. All vehicles are equipped with a "Data Track" system, allowing the administrative office to track and allocate all vehicles quickly and efficiently. We also have mobile and caterpillar cranes, mini excavators, pay loaders, bulldozers, rollers and our versatile Menzi-Muck.



Martens

Sanderboutlaan 51

NL- 6181 DN Elsloo

Tel. +31 (0) 46 437 14 32

Fax +31 (0) 46 437 80 92